

Panels Aluminium/Chen-Chen

Construction: 1,5 mm Aluminium (EN AW-1050A-GSB approved powder coating of aluminium surface)
 Insulation - Polystyrene (Appr. 33 kg/m³ - heat conductivity: 0,034 W/mK)
 1,5 mm long grain inner veneer
 1,5 mm long grain veneer
 1,5 mm cross grain veneer
 1,5 mm Chen-Chen veneer

U-Value:

U-Value - W/m ² K						
24 mm	26 mm	28 mm	32 mm	36 mm	40 mm	48 mm
1,39	1,29	1,20	1,05	0,93	0,84	0,70

Heat conductivity is calculated on the basis of the practical heat conductivity of each included material - taken from data sheets and DS418, version 6, 2002. Also relating to EN 12524.

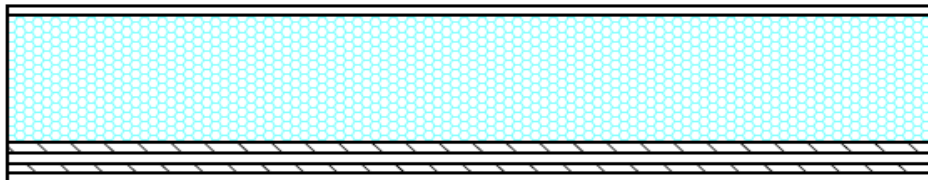
Weight:

Weight appr. Kg./m ²						
24 mm	26 mm	28 mm	32 mm	36 mm	40 mm	48 mm
7,6	7,7	7,7	7,9	8,0	8,1	8,4

Measure: Min.: 250 x 250 mm - Max.: 1200 x 2400 mm / 2400 x 1200 mm

Tolerances: Width/Height: +/- 1 mm - Diagonal: +/- 2 mm - Thickness: +/- 0,8 mm

Section drawing:



Made: 10.03.14	Data sheet: PMN	Draw.: HMN
Revised:	Data sheet:	Draw.:

O.H.Industri A/S
 Smedevej 17
 DK - 7430 Ikast
 +45 9725 1200
www.ohindustri.com