

Panels Mahogany/Mahogany

Construction: 1,5 mm Mahogany veneer
 1,5 mm cross grain veneer
 1,5 mm long grain veneer
 1,5 mm long grain inner veneer
 Insulation - Polystyrene
 1,5 mm long grain inner veneer
 1,5 mm long grain veneer
 1,5 mm cross grain veneer
 1,5 mm Mahogany veneer

(Appr. 33 kg/m³ - heat conductivity: 0,034 W/mK)

U-Value:

U-Value - W/m ² K									
23 mm	26 mm	28 mm							
1,59	1,39	1,29							

Heat conductivity is calculated on the basis of the practical heat conductivity of each included material - taken from data sheets and DS418, version 6, 2002. Also relating to EN 12524.

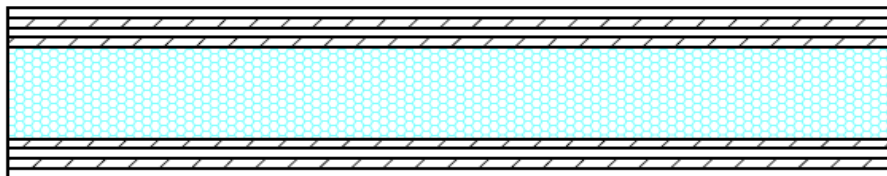
Weight:

Weight appr. Kg./m ²									
23 mm	26 mm	28 mm							
9,4	9,5	9,6							

Measure: Min.: 250 x 250 mm - Max.: 1200 x 2400 mm / 2400 x 1200 mm

Tolerances: Width/Height: +/- 1 mm - Diagonal: +/- 2 mm - Thickness: +/- 0,8 mm

Section drawing:



Made: 17.03.14	Data sheet: PMN	Draw.: HMN
Revised:	Data sheet:	Draw.:

O.H.Industri A/S
 Smedevej 17
 DK - 7430 Ikast
 +45 9725 1200
www.ohindustri.com