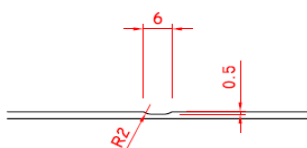
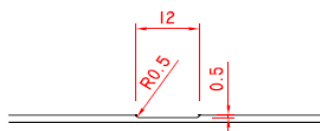


Data Sheet
Design grooves alu panels



Standard Grooves panel Type 60 (ALU)

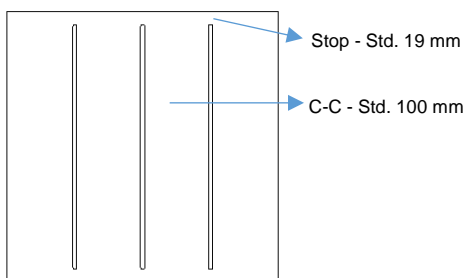
Type 60 (6 x 0,5 mm)
Center to Center: 100 mm
Stop from edge: 19 mm



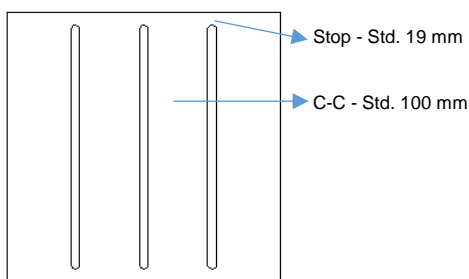
Standard Grooves panel Type 20 (ALU)

Type 20 (12 x 0,5 mm)
Center to Center: 100 mm
Stop from edge: 19 mm

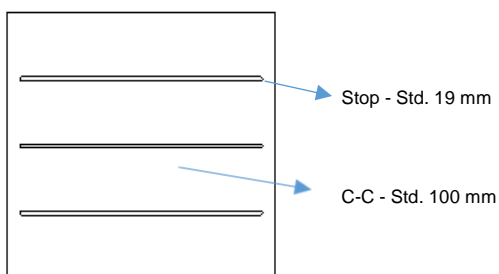
Vertical Grooves type 60:



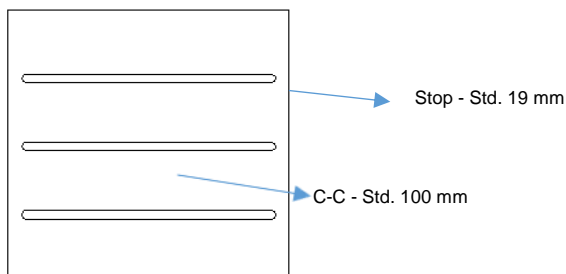
Vertical Grooves type 20:



Horizontal Grooves type 60



Horizontal Grooves type 20



* Alupanels can only be delivered in above designs and only with grooves on one side

Made: 25.04.2017	Data sheet: CRS	Draw.: CRS
Revised:	Data sheet:	Draw.:

O.H.Industri A/S
Smedevej 17
DK - 7430 Ikast
+45 9725 1200
www.oh-industri.com